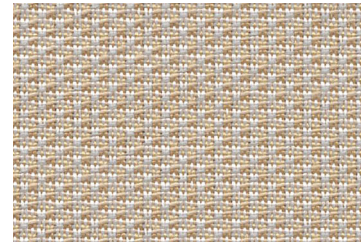


Panel

# Quickship

# Quickship

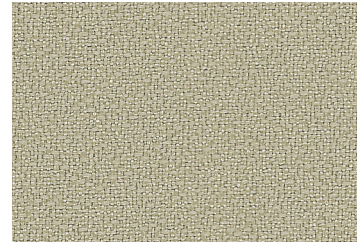
Panel



Essence  
Cream 2631



Amaze  
Bone 1262



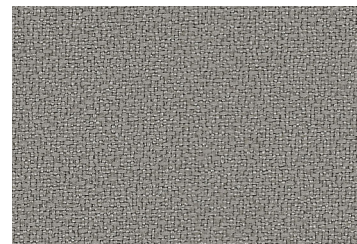
Framework  
Sandy Pebble 2554



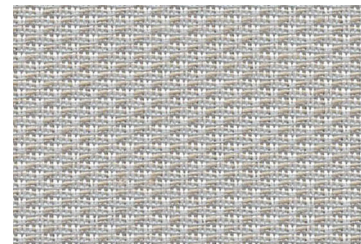
Essence  
Tobacco 2635



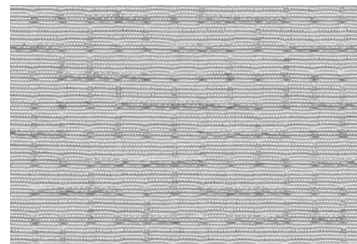
Amaze  
Morel 1264



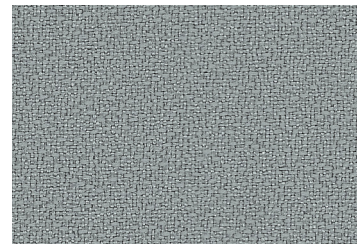
Framework  
Dove Gray 2689



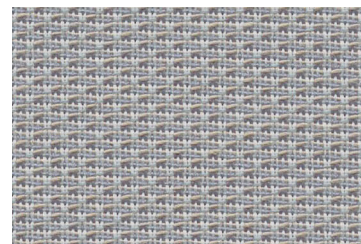
Essence  
Ash 2634



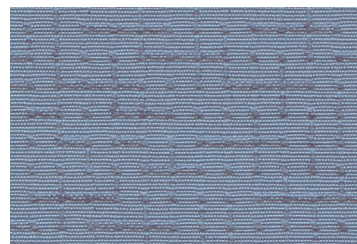
Amaze  
Platinum 1260



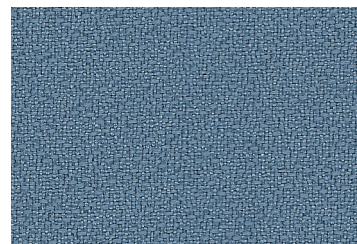
Framework  
Gray Blue 2553



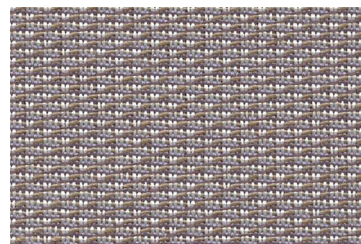
Essence  
Heather 2633



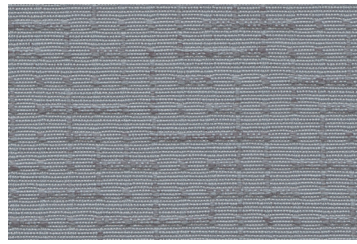
Amaze  
Sky 1268



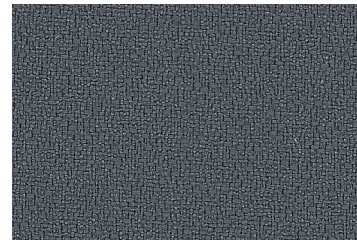
Framework  
Blue Smooth 2519



Essence  
Charcoal Melange 2637



Amaze  
Steel 1266



Framework  
Elephant 2690

## Specifications

Pattern	Content	Weight	Width	Repeat
Amaze 2139	82% polyester 18% post-consumer recycled polyester	12.9 ± 1.0 oz./lin. yd	66" min. useable	11.7" vertical 12.8" horizontal
Essence 4873	100% polyester	11.8 ± 1.0 oz./lin. yd	66" min. useable	.27" vertical .18" horizontal
Framework 2762	100% polyester	9.5 ± 0.5 oz./lin. yd	66" min. useable	none

## Cleaning Code

Standard Care Label W-S. Clean with water based cleaning agents, foam or pure, water free solvents. Vacuuming or light brushing is recommended to prevent dust and soil buildup.

## Miscellaneous

- Application testing of these products are recommended.
- Colors may vary between dye lots.
- These are directional fabrics.

Proudly woven in North America supporting our local communities.

## Sustainability



## Guilford of Maine Collection

Renowned for its exceptional performance and style, Guilford of Maine has set industry standards in acoustics and panel fabrics for many decades. We present the Guilford of Maine Collection - a selection of timeless fabrics.

## Performance

### Colorfastness to light (AATCC 16.3 Option 3)

Amaze: Grade 4 min. at 40 hours  
Essence: Grade 4 min. at 40 hours  
Framework: Grade 4 min. at 40 hours

### Colorfastness to crocking (AATCC 8)

Amaze: Grade 4 min. dry & Grade 3 min. wet  
Essence: Grade 4 min. dry & Grade 3 min. wet  
Framework: Grade 4 min. dry & Grade 3 min. wet

### Breaking Strength (ASTM D5034)

Amaze: 290 lbf min. warp and 230 lbf min. fill  
Essence: 160 lbf min. warp and 105 lbf min. fill  
Framework : 150 lbf min. warp and 125 lbf min. fill

### Flammability

Amaze: ASTM E84 Class I or A  
Essence: ASTM E84 Class I or A  
Framework: ASTM E84 Class I or A

These patterns are included in the underwriters laboratory panel fabric recognition program. Additional testing of this U.L. recognized fabric is not required on approved panels from participating manufacturers.

Certification Marks owned by the Association for Contract Textiles, Inc.

